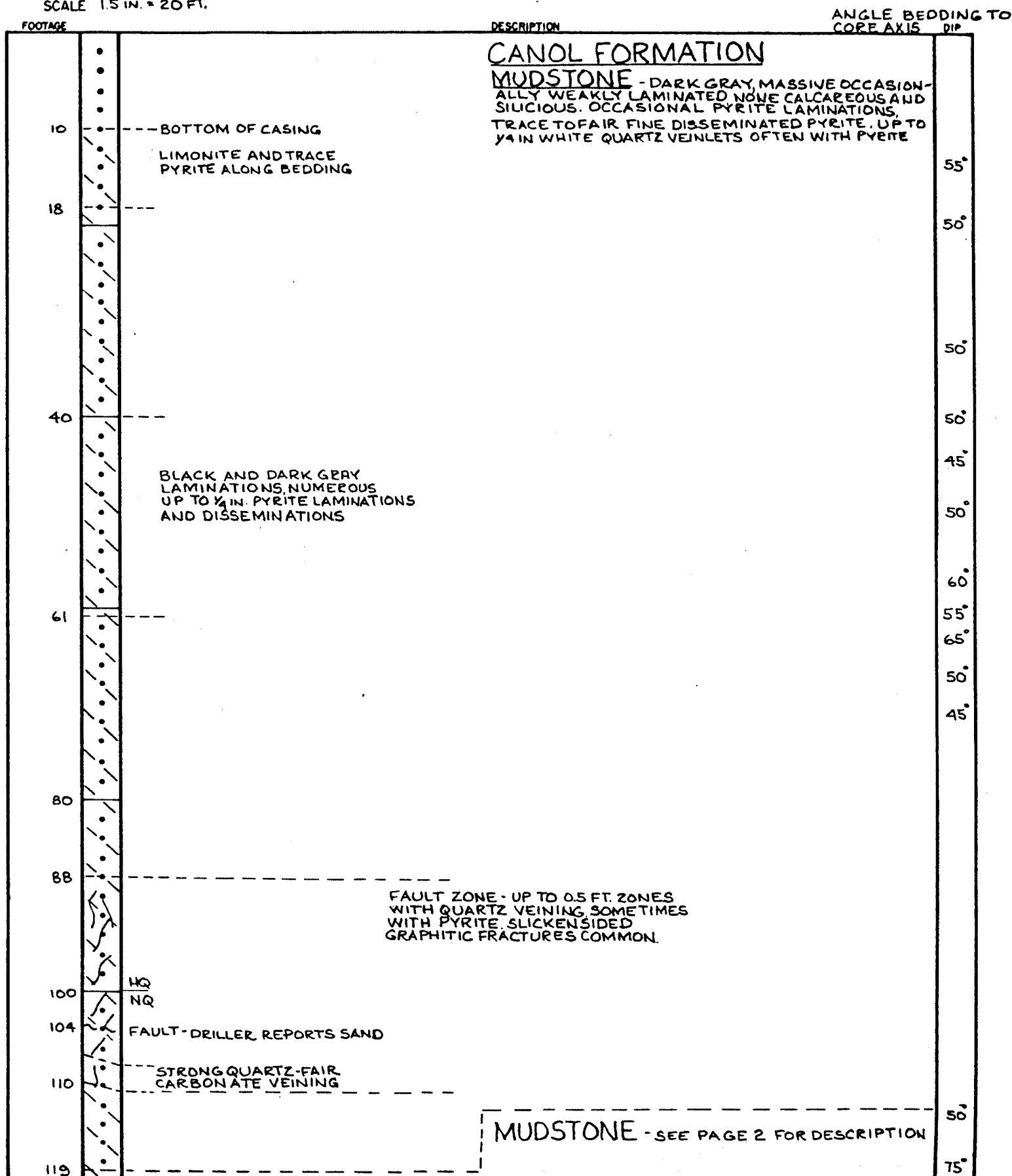


APPENDIX ONE  
 ESS CLAIMS, HESS CREEK, MAC MILLIAN PASS AREA  
 NTS 1050/1

# DRILL HOLE LOG

COORDINATES O+005; 1+00W  
 ELEVATION 4155 FT.  
 DIP -86°  
 AZIMUTH 060°  
 SCALE 1.5 IN. = 20 FT.

HOLE No. 1  
 PAGE 1 OF 7  
 CORE SIZE HQ TO 100 FT, NQ TO 732 FT  
 HOLE STARTED JUNE 30, 1978  
 HOLE COMPLETED JULY 10, 1978  
 LOGGED BY M.P. PHILLIPS



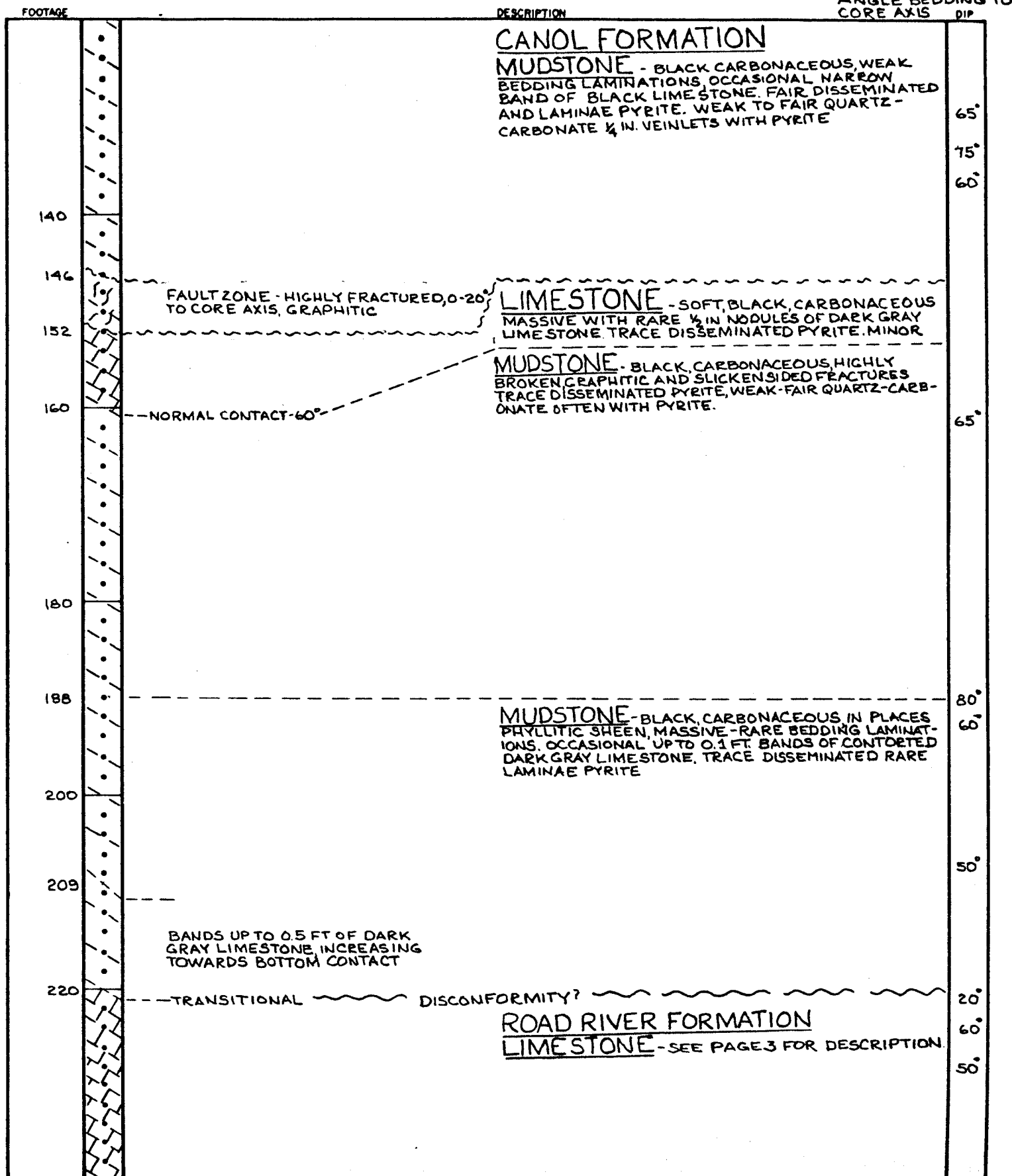
# DRILL HOLE LOG

HOLE No. 1  
PAGE 2 OF 7

COORDINATES  
ELEVATION  
DIP  
AZIMUTH  
SCALE

CORE SIZE  
HOLE STARTED  
HOLE COMPLETED  
LOGGED BY

ANGLE BEDDING TO  
CORE AXIS DIP



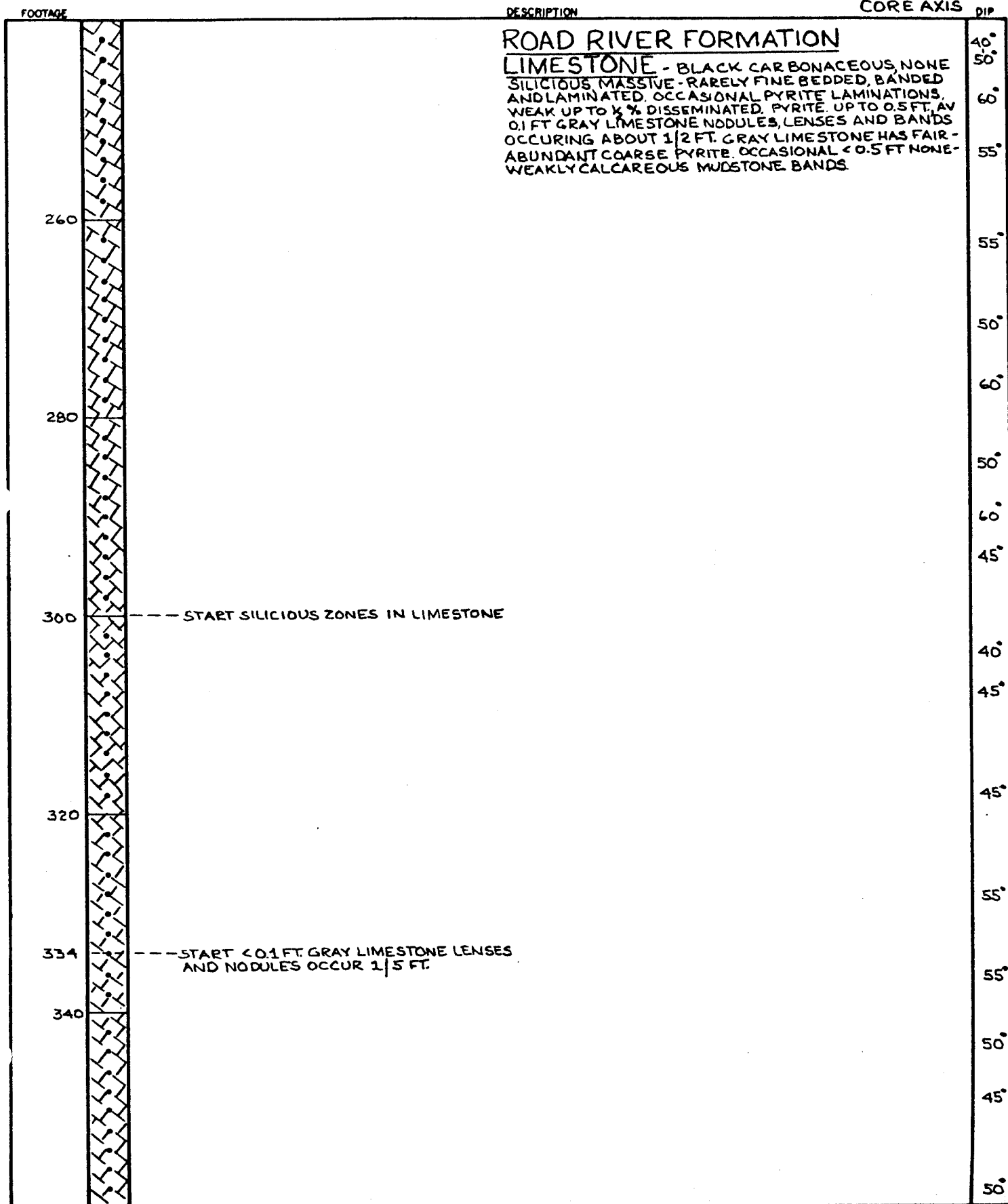
# DRILL HOLE LOG

HOLE No. 1  
PAGE 3 OF 7

COORDINATES  
ELEVATION  
DIP  
AZIMUTH  
SCALE

CORE SIZE  
HOLE STARTED  
HOLE COMPLETED  
LOGGED BY

ANGLE BEDDING TO  
CORE AXIS DIP



# DRILL HOLE LOG

HOLE No. 1  
PAGE 4 OF 7

COORDINATES  
ELEVATION  
DIP  
AZIMUTH  
SCALE

CORE SIZE  
HOLE STARTED  
HOLE COMPLETED  
LOGGED BY

ANGLE BEDDING TO  
CORE AXIS DIP

FOOTAGE	DESCRIPTION	ANGLE BEDDING TO CORE AXIS	DIP
	<u>ROAD RIVER FORMATION</u> <u>LIMESTONE</u> - DESCRIPTION AS PAGE 3, FAIR TO MODERATELY SILICIOUS.		
369	-----	40°	
		30°	
380		30°	
		45°	
392	-----		
393	----- FAULT-MODERATE-QUARTZ VEINING IN FRACTURED ROCK		
400		50°	
		35°	
		60°	
415.5			
4180	----- FAULT-STRONG, STRONG QUARTZ VEINING		
	-----		
	----- FAULT-HIGHLY BROKEN		
440			
445	-----		
446	----- FAULT-QUARTZ CEMENTING SHALE BRECCIA		
457	-----		
459	----- FAULT-VUGGY QUARTZ CEMENTING SHALE BRECCIA -----		

GRAPHITIC SLICKENSIDED  
FRACTURES COMMON  
369 - 459 FT.

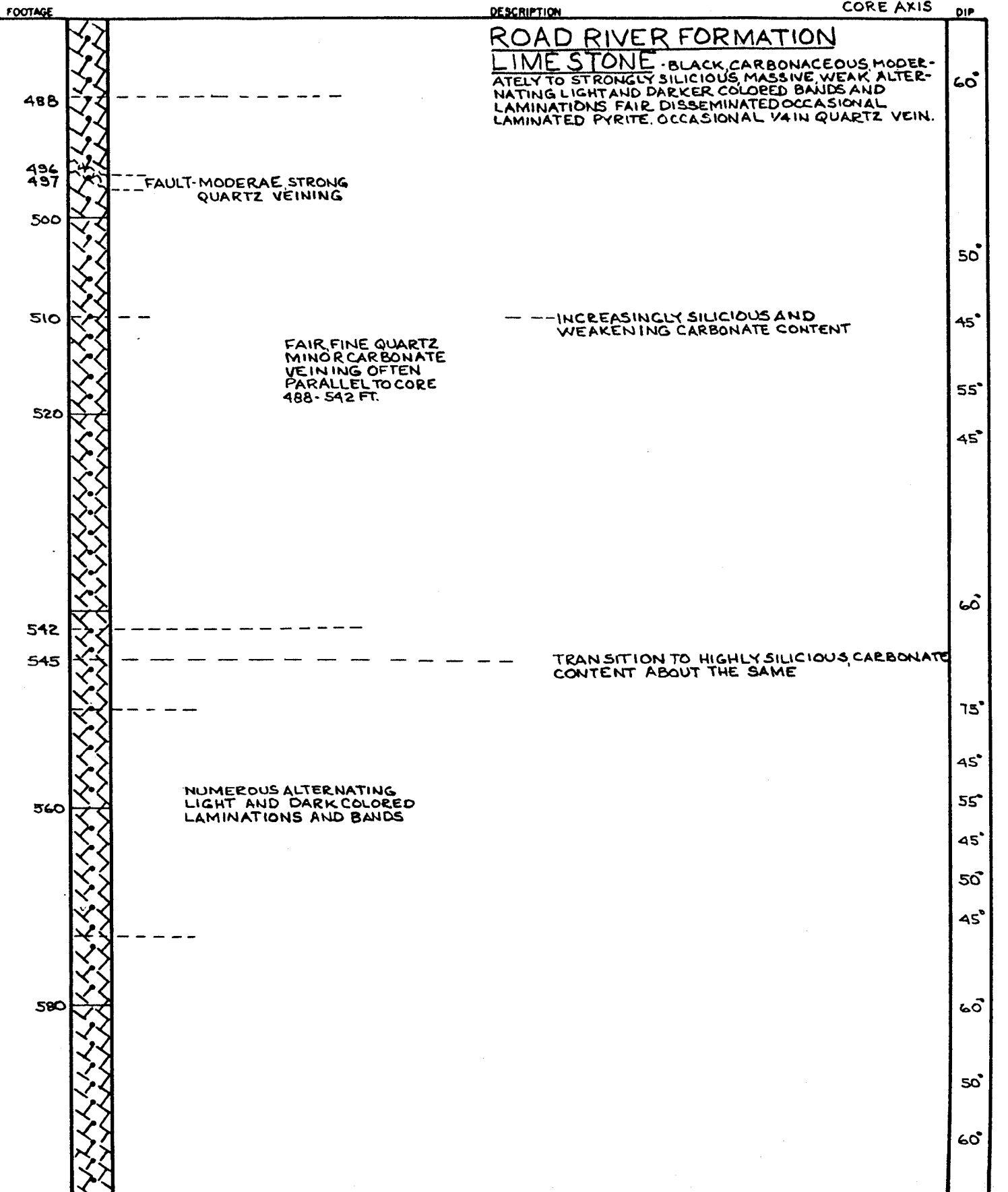
# DRILL HOLE LOG

HOLE No. 1  
PAGE 5 OF 7

COORDINATES  
ELEVATION  
DIP  
AZIMUTH  
SCALE

CORE SIZE  
HOLE STARTED  
HOLE COMPLETED  
LOGGED BY

ANGLE BEDDING TO  
CORE AXIS



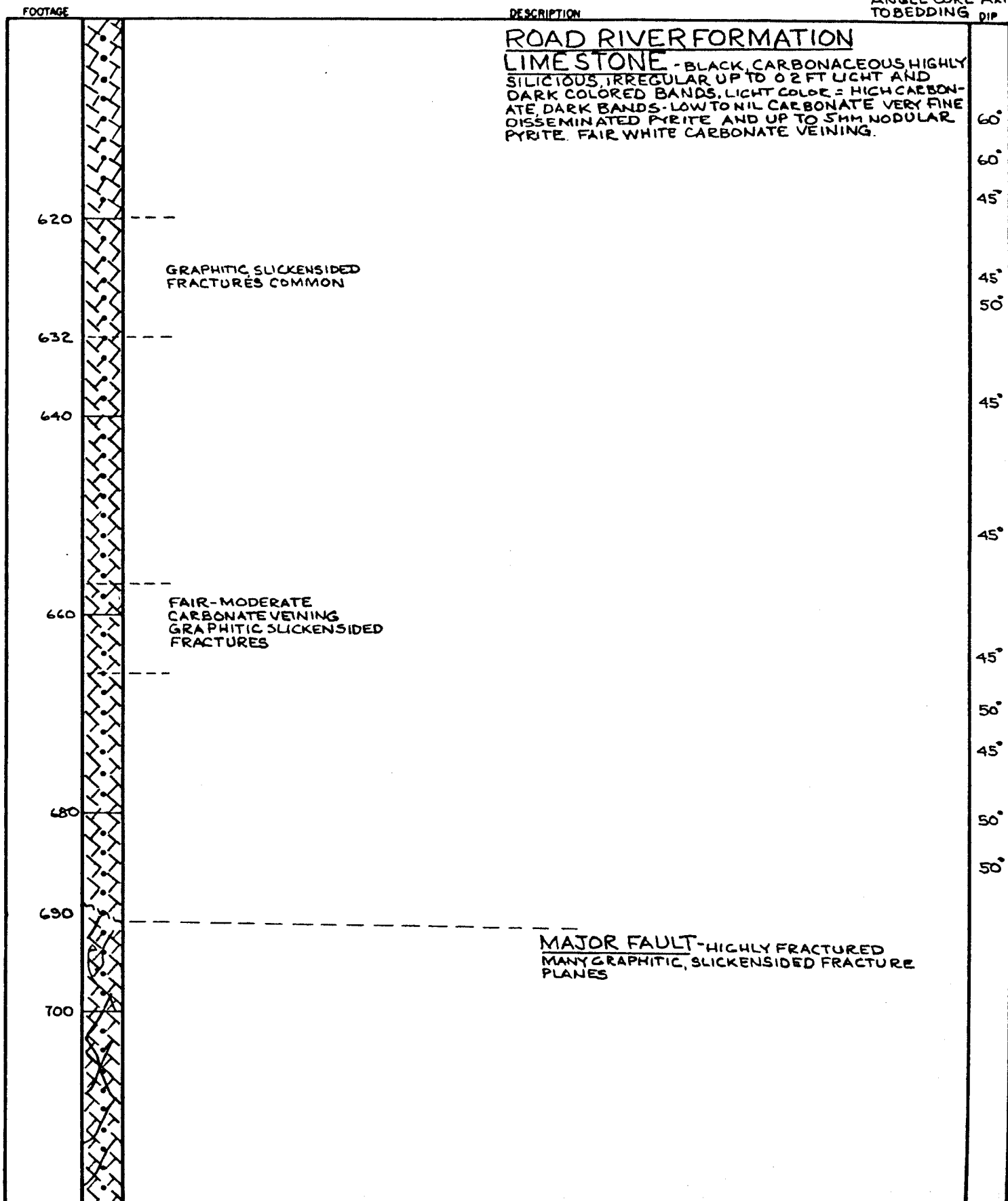
# DRILL HOLE LOG

HOLE No. 1  
PAGE 6 OF 7

COORDINATES  
ELEVATION  
DIP  
AZIMUTH  
SCALE

CORE SIZE  
HOLE STARTED  
HOLE COMPLETED  
LOGGED BY

ANGLE CORE AXIS  
TO BEDDING DIP



HOLE No. 1  
PAGE 7 OF 7

CORE SIZE  
HOLE STARTED  
HOLE COMPLETED  
LOGGED BY

**DESCRIPTION**

**DIP**

ROAD RIVER FORMATION  
LIMESTONE - SEE PAGE 6 FOR DESCRIPTION  
FAULT ZONE

732  END OF HOLE

## ACID DIP TESTS

<u>FT</u> <u>DEPTH</u>	<u>DIP</u>
0	86°
200	86°
400	70°
600	67°
732	65°